

全球服务热线 : Service Hotline
400-0086-020

Labelling system **solution**

贴标系统解决方案



广州市万世德智能装备科技有限公司

地址：中国广东广州市花都区华兴工业区华兴东路3号
电话：020-66809333 传真：020-61807333
邮箱：sale@vanta.cn 网址：http://www.vanta.cn

佛山市万世德机器人机械技术有限公司

地址：佛山市南海区狮山镇南海软件科技园（研发楼A栋A401-6室）
电话：0757-63990266 传真：0757-63990265

Guangzhou Vanta Intelligent Equipment Technology Co., Ltd

Add: No.3 Huaxing East Road, Huaxing Industrial Area,
Xinhua Town, Huadu District, Guangzhou City,
Guangdong, China
Tel: +86-20-66809333 Fax: +86-20-61807333
E-mail: sale@vanta.cn Web: http://www.vanta.cn

Foshan Vanta Robot Mechanical Technology Co., LTD

Add: Room A401-6, Nanhai Software Technology Park,
Nanhai District, Foshan, Guangdong, China
Tel: +86-757-63990266 Fax: +86-757-63990265



VANTA营销网站



VANTA官方微信

The Leader Of Creating Efficiency In Packing Industry
创造包装效益的行业领导者

VANTA™ 万世德

Roll-fed Rotary Hot Melt Labelling Machine

回转式热熔胶贴标机

中心大盘回转，并配以螺杆进瓶的热熔胶贴标机，是为了满足您想在各种形状和各种材质的瓶子上，简单、安全、稳定、可靠地贴环身式标签的需求。我们万世德的热熔胶贴标机系列机型，几乎能满足您这方面的所有需求。在饮料、水、调味品、奶制品等行业，您都可以看到万世德热熔胶贴标机的身影。

Roll-fed Rotary hot melt labelling machine equipped with turning table and feeding screw is for achieving the goal that labels on different shape and different material bottle easily, safely and perfectly. Roll-fed Rotary hot melt labelling machine from Vanta is widely applied in nearly all kind of industries such as beverage, water, condiment, dairy product etc.



灵活性 Flexibility

- 最大限度减少了更换瓶型配置件的时间；
- 采用配方方式存储瓶型参数，可快速设定完成；
- 适应圆瓶、方瓶、椭圆瓶、异形瓶等各种瓶型；
- 适应工程塑料、玻璃、金属等各种材质。
- Minimize the time of changing change-over parts;
- Save parameter of different bottle by formula, which can quickly finish setting;
- Be available for round bottle, square bottle, elliptic bottle, special-shaped bottle etc.
- Be available for engineering plastic, glass, metal and other materials.

高效、可靠、精准 Efficient, reliable and accurate

- 完善的自动化：进瓶三处、出瓶一处瓶流瓶速检测，自动调整贴标速度；
- 可靠的进瓶和出瓶：由齿轮、同步带传动系统传递动力的螺旋、进出瓶星轮和中心大盘，确保瓶子工位转接准确可靠；
- 针对不同形状的瓶子，我们总有现成的成熟驱动方案。
- Comprehensive automation system: 3 pieces of bottle speed sensor are set before labeling, 1 piece is set after labeling. Labeling speed is adjusted automatically;
- Stable bottle feeding and outputting system : Consist of gear, synchronous belt transmission system, infeed and outfeed star wheel central turning table, make sure each process connected accurately and stably;
- For different kind of bottles we have ready-made and good solution.

功能强大、系统完善的标站

Labelling station with multiple functions and impeccable system

- 标签传送通过真空和吹气系统，相关零部件使用寿命更长，维护更简单；
- 高精度送标和切标系统，标签长短差在 $\pm 1\text{mm}$ 内；
- 进口张力控制系统，保证标签任何速度都能稳定运行；
- 采用细网纹胶辊滚胶，比喷胶等方式节省15%的耗胶量；
- 静止和旋转刀为合金材料，动刀可更换4刀刃结构，延长了使用寿命；
- 贴标头尾重叠域，刷标结构再刷标，二次保障贴标捏合。
- Label is conveyed across vacuum and blowing system, performance life can be largely extended and maintenance is easier ;
- High accuracy label transfer and cutting system, label length tolerance: $\pm 1\text{mm}$;
- Imported tension control system, guarantees label can be transferred smoothly at anytime;
- Applying Micro anilox gule roller, 15% glue consumption can be saved compared to spraying type;
- Alloy Fixed and rotary cutting blade with 4-blade quick changed structure, extends performance life;
- Overlapping area of two edges of label would be re-brushed to make sure two edage can be stucked perfectly.

电气和安全 Electric and safety

- 加装进口品牌散热风扇的304不锈钢整体电柜，电气设备使用寿命和稳定性有效保证；
- 德国、法国和台湾知名品牌低压元件和检测元件；
- 设有机械过载保护，电动调节处设有极限位检测；
- 系统错误代码和设备运行状态10.4英寸触摸屏显示，并辅以3层报警灯；
- 日本和台湾品牌气动系统。
- 304 stainless steel electric cabinet with imported brand cooling fans guarantees electrical parts service life and stability;
- Germany, France and Taiwan brand low voltage and detecting elements;
- Equipped with overload protection and limit detection in electrical control position;
- System error code and running state are indicated in 10.4 inch touching panel which is equipped with an alarm light with 2 layers lamp;
- Japanese and Taiwan pneumatic system.

传动外购件、主体框架和材料等

Purchased transmission parts, Frame and Material

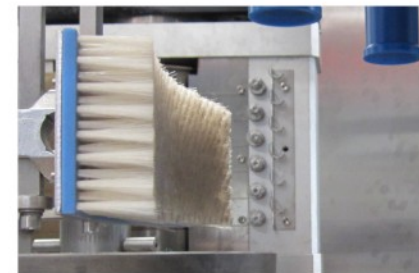
- 德国(西门子、NEUGART)、意大利和国内的知名品牌传动件；
- 承重机架优质碳钢烤漆防锈，使用寿命长；
- 进瓶螺旋、进瓶导轨等部件均由低摩擦系数、高耐磨性的合成非金属材料制成，免维护，低噪音，对瓶体没有损伤。
- Transmission parts: Germany brand (Siemens, Neugart), Italy and domestic China famous brand;
- Supporting frame: High quality carbon steel covered by anti-rust painting, longer performance life.



纠偏系统label deviation correcting



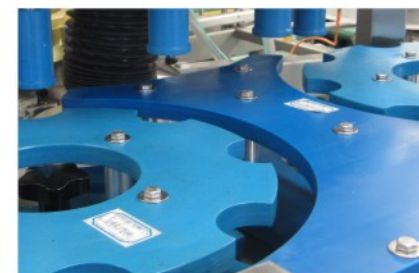
切刀结构cutting drum



刷标结构label smoothing



滚胶结构glue drum



星轮及导板结构star-wheel and guide

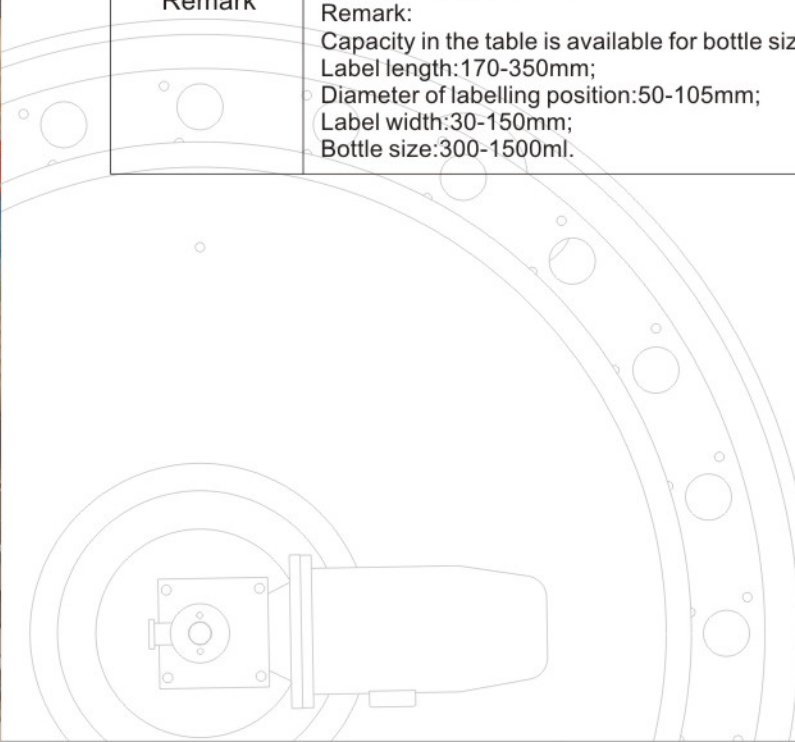
圆瓶时采用多楔带；
方瓶、椭圆瓶定位贴标时采用凸轮曲线板结构，或每瓶子的自转采用伺服系统；
带把手酱油瓶定位贴标时采用三套凸轮曲线板结构,或每瓶子的自转采用伺服系统配合电气检测；
定位贴标要求精确时，每个瓶子的自转采用伺服系统。

Round bottle labelling: Toothed belt transmission;
Square and oval bottle positioning labelling: Mechanical cam structure or servo motor system for each bottle rotation ;
Sauce bottle with handle positioning labelling: 3 sets of Cam-curve plate structure or servo motor system with electrical detection for each bottle rotation;
High precision in positioning labelling required, servo motor system should be applied in bottle rotation.



回转式热熔胶贴标机额定产能表（瓶/小时）
Roll-fed Rotary Hot Melt Labelling Machine (BPH)

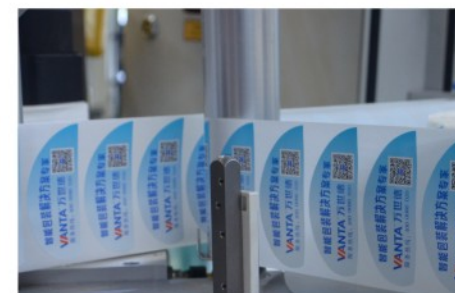
		两工位贴标轮 2 division vacuum drum		三工位贴标轮 3 division vacuum drum		两工位大贴标轮 2 division extra vacuum drum	
型号 Model	头数 Heads	圆瓶 Round bottle	方瓶 Square bottle	圆瓶 Round bottle	方瓶 Square bottle	圆瓶 Round bottle	方瓶 Square bottle
PHR9	9	12000	9000				
PHR12	12	16000	13000				
PHR15	15	20000	16000				
PHR18	18			25000	20000		
PHR24	24			36000	27500		
PHR9S	9					8000	6000
备注 Remark		表中产能说明： 容量小于1L的瓶子都能达到表中所列产能； 对应标签长度170至350mm； 对应瓶子贴标处直径50至105mm； 对应标签宽度30至150mm； 对应常见瓶容量300ml至1500ml。 Remark: Capacity in the table is available for bottle size ≤ 1 Liter; Label length:170-350mm; Diameter of labelling position:50-105mm; Label width:30-150mm; Bottle size:300-1500ml.				表中产能说明： 对应标签长度235至520mm； 对应瓶子贴标处直径70至160mm； 对应标签宽度30至150mm； 对应常见瓶容量0.75L至5L。 Remark: Label length:235-520mm; Diameter of labelling position: 70-160mm; Label width:30-150mm; Bottle size:0.75-5L.	



Roll-fed rotary adhesive Labelling machine 回转式不干胶贴标机

不干胶贴标应用十分广泛，在全球范围内的贴标设备/产品中，不干胶贴标方式约占1/4，可以应用在食品、饮料、日化、医药、物流。不干胶贴标以其粘贴牢固，防水防滑，图案精美，适应性强等特点，成为客户追求高质量外观包装的一种选择。

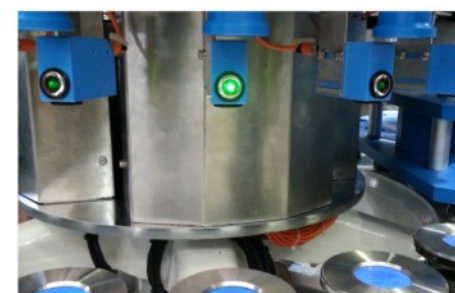
Roll-fed ratary adhesive labelling machine is applied widely in food, beverage, daily, medicine and logistics etc .Among all kinds of labelling equipments /products all over the world, Roll-fed ratary adhesive labelling machine has shared about 1/4 of the market.



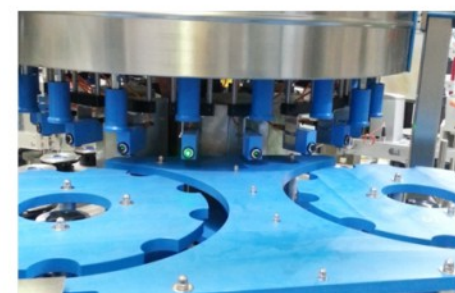
标站labelling station



伺服转瓶server-driving bottle rotation



瓶子定位系统bottle orienting system



星轮及导板结构star-wheel and guide

高效、可靠、精准 Efficient, reliable and accurate

- 设备在全自动模式下运行，依据进瓶量多少自动进行速度调节；
- 能贴的标签长度远大于机械凸轮驱动瓶子转动的结构；
- 定位贴标和非定位贴标都可以实现；
- 检测光电和伺服电机协同定位，可使标签精准贴在所需标位上；
- 适用的瓶型非常广泛；
- 平整刷标时，瓶子可以自转，标签平整效果更理想。
- Runs in full-automatic mode, speed can be adjusted base on bottle feeding;
- Maximum length of label is much longer than bottle rotation which driven by mechanicalcam;
- Positioning labeling and non-positioning labelling are available;
- Label can be positioned with high accuracy by detected sensor and servo motor
- Available for majority kinds of bottle;
- Bottle can rotate to make label to be more smoothly around bottle.

功能强大，系统完善的标站 Labelling Station With Multiple Functions And Complete System

- 配置德国进口标站，更好的可靠稳定性；
- 标站可前后、上下，倾斜调整，满足瓶子多部位贴标的要求；
- 换标签时，标站可以整体退后，方便更换。
- Imported from Germany, with better stability.
- Can be adjusted forward and backward, upward and downward and angularly.
- Can move backward to change different label easily.

控制系统 Control system

- 设备的运行状况通过触摸显示屏体现,易于操控；
- 系统内能存储多种瓶型的各项参数，更换瓶型工作简单。
- Running state can be showed in touching panel, easy to control;
- Parameter of all kinds of bottle can be saved in system, easy to shift from one bottle size to another size.

主体框架和材料 Frame and material

- 进瓶螺旋、进瓶导轨等均由低摩擦系数、高耐磨性的材料制成；
- 主要承重机架优质碳钢烤漆防锈，使用寿命长；
- 直接外观件用SUS304不锈钢制成。
- Bottle feeding screw and rail are made of low friction coefficient, high wear resistance materials;
- Main supporting frame: High quality carbon steel covered by anti-rust painting, longer performance life.

瓶子材料：玻璃瓶、工程塑料瓶和金属瓶等
（灌装前、灌装后都可以贴标）
瓶子形状：圆形、方形、多边形、椭圆形、异形瓶
瓶子最小~最大高度：120mm~370mm
瓶子最小~最大直径：40mm~105mm

注：以上容器规格是标准设备的设计参数范围，超出以上规格需要酌情更改设计。

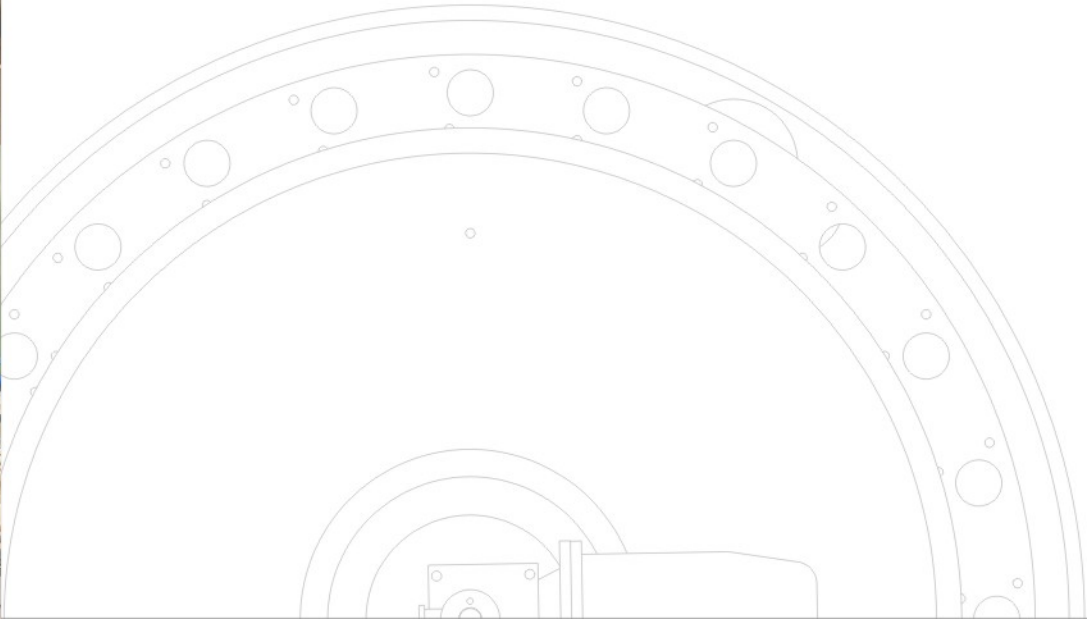
Bottle material: Glass, Engineering plastic, Metal (labelling is available before and after filling)
Bottle shape: Round, Square, Polygon, Oval, Complicated-shape.
Bottle height: 120mm~370mm
Bottle diameter: 40mm~105mm

Remark: Above bottle volume is in scope of standard equipment, design need to be modified accordingly if beyond the standard scope.



回转式不干胶贴标机额定产能表（瓶/小时）
Roll-fed rotary adhesine labelling machine(BPH)

型号 Model	头数 Heads	瓶子自转方式 Bottle rotation type	额定产能 (瓶/小时) Rated output (BPH)	可配标站(台) Labelling station (Set)	标签长度(mm) Label length (mm)	适应的瓶子 直径(mm) Bottle diameter scope (mm)
PSL9/APSL9	9	凸轮/伺服 Cam/ Server motor	6000-12000	2	30-160/30-320	45-130
PSL12/APSL12	12		12000-16000	2	30-110/30-180	45-105
PSL9S/APSL9S	9		6000-7000	3	30-200/30-320	45-160
PSL12S/APSL12S	12		10000-16000	3	30-145/30-200	45-120
PSL15/APSL15	15		12000-20000	3	30-100/30-150	45-105
PSL18/APSL18	18		15000-24000	3	30-85/30-125	45-95
PSL20/APSL20	20		20000-27000	3	30-100/30-110	45-105

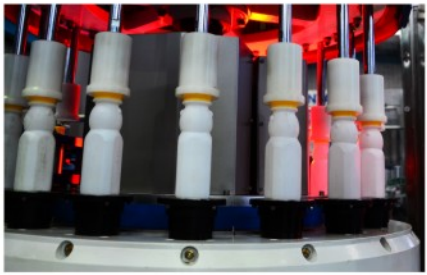


BPS Series Bottle Unscrambler

BPS系列理瓶机

瓶子自转采用全伺服驱动；
理瓶机的原理来自于旋转式贴标机，万世德有10年的贴标机设计制造经验；
进瓶螺旋的设计和制造；
采用美国cognex视觉检测系统；
沿袭贴标机的完善的电气系统。

Bottle rotation is driven by server motor;
Principle comes from rotary labelling machine, Vanta has 10 years of experience in designing and manufacturing labelling machine;
Bottle feeding screw design and manufacture;
U.S.A Cognex visual inspection system;
Impeccable electric system similar to labelling machine.



理瓶机型号和产能（瓶/小时）
Machine model and capacity (BPH)

型号 Model	头数 Heads	瓶子自转方式 Bottle rotation type	额定产能 (瓶/小时) Rated output (BPH)
BPS12	12	凸轮/伺服 Cam/ Server motor	21000-22000
BPS18	18		32000-33000



我们的客户 Our Clients

